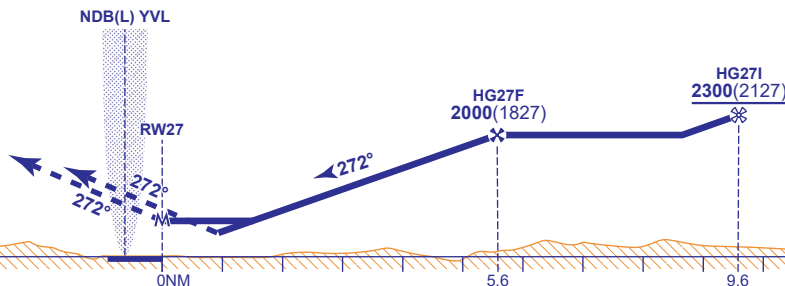


RECOMMENDED PROFILE Gradient 5.22%, 317FT/NM

NM to RW27	5	4	3	2
ALT(HGT)	1810(1637)	1500(1327)	1180(1007)	860(687)

MAPt (LNAV): RW27

Continuous climb to 2000.
Initially straight ahead to
HGM01, then left to HGM02,
then YVL NDB to join the hold.



Aircraft Category		A	B	Rate of descent	G/S KT		130	120	100	80
OCA (OCH)	LNAV	710(537)	710(537)		FT/MIN		690	635	530	425
VM(C)OCA (OCH AAL)	Total Area	770(568)	840(638)							

- NOTE**
- 1 Lowest holding altitude 2000. Lowest altitude to commence procedure from hold is 3000.
 - 2 Visiting aircraft should make initial contact with Yeovil Radar, 127.350MHz.
 - 3 Where possible, pilots should route via IAF OSBIR to remain clear of Yeovil airspace.
 - 4 RNP procedure not available when AFIS is in operation.
 - 5 The RNP hold YVL is coincident with the NDB hold; either can be used.
 - 6 Obstacles infringe the Visual Segment Surface on final approach. See EGHG AD 2.10 Aerodrome Obstacles.

CHANGE (4/23): WESTLAND RADAR REMOVED.